

Product overview

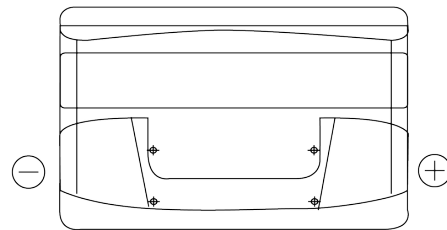
Batteries for Cars

Excell EB1000

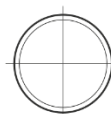


Part number	EB1000
Technology	Flooded
EAN/GTIN	3661024034715
Voltage	12 V
Capacity	100 Ah
CCA	720 A
Length	315 mm
Width	175 mm
Height	205 mm
Box size	LH4
Polarity	ETN 0
Terminal Type	EN taper post
Hold Down	B13
Weights (subject of variation)	21.90 kg

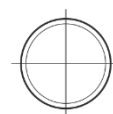
Polarity



Terminal Type



Positive Terminal



Negative Terminal

Hold Down



Design, features and specifications are subject to change without notice. We disclaim any representation or warranty, express or implied, concerning the data or recommendations, and in no event shall be liable for any loss or damage claimed to have arisen as a result. Some products may not be available in your local market.