

## Product overview

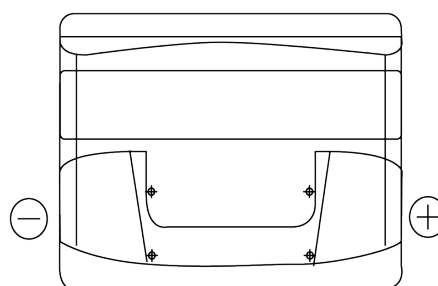
Batteries for Marine and Leisure

### Start TN500

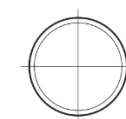
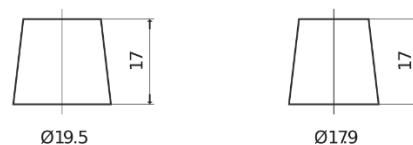


Part number	TN500
Technology	Flooded
EAN/GTIN	3661024046107
Voltage	12 V
Capacity	50 Ah
CCA	450 A
MCA	600
Length	207 mm
Width	175 mm
Height	190 mm
Box size	L01
Polarity	ETN 0
Terminal Type	EN taper post
Hold Down	B13
Weights (subject of variation)	12.20 kg

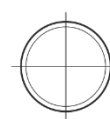
#### Polarity



#### Terminal Type



Positive Terminal



Negative Terminal

#### Hold Down



Design, features and specifications are subject to change without notice. We disclaim any representation or warranty, express or implied, concerning the data or recommendations, and in no event shall be liable for any loss or damage claimed to have arisen as a result. Some products may not be available in your local market.