

**Product overview**

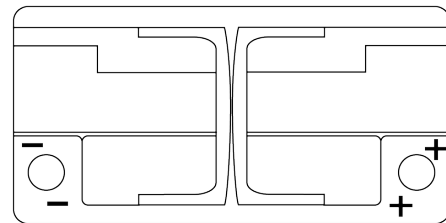
Batteries for Cars

**AGM EK960**



Part number	EK960
Technology	AGM
EAN/GTIN	3661024037921
Voltage	12 V
Capacity	96 Ah
CCA	850 A
Length	353 mm
Width	175 mm
Height	190 mm
Box size	L05
Polarity	ETN 0
Terminal Type	EN taper post
Hold Down	B13
Weights (subject of variation)	26.10 kg

**Polarity**

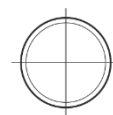
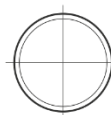


**Terminal Type**



Ø19,5

Ø179



Positive Terminal

Negative Terminal

**Hold Down**



Design, features and specifications are subject to change without notice. We disclaim any representation or warranty, express or implied, concerning the data or recommendations, and in no event shall be liable for any loss or damage claimed to have arisen as a result. Some products may not be available in your local market.