

**Product overview**

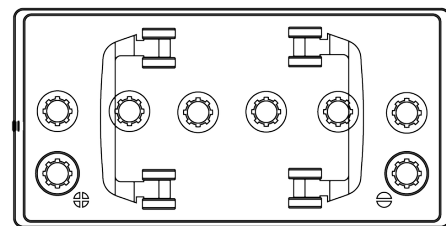
Batteries for Trucks, Buses, Construction, Agriculture

**Endurance+PRO Gel CD851T**



Part number	CD851T
Technology	GEL
EAN/GTIN	3661024017008
Voltage	12 V
Capacity	85.0 Ah
CCA	350 A
Length	349 mm
Width	175 mm
Height	235 mm
Box size	D02
Polarity	ETN 1
Terminal Type	EN taper post
Hold Down	B0
Weights (subject of variation)	29.50 kg

**Polarity**

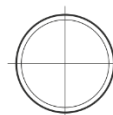


**Terminal Type**

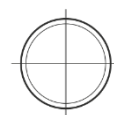


Ø19.5

Ø17.9



Positive Terminal



Negative Terminal

**Hold Down**



Design, features and specifications are subject to change without notice. We disclaim any representation or warranty, express or implied, concerning the data or recommendations, and in no event shall be liable for any loss or damage claimed to have arisen as a result. Some products may not be available in your local market.