

**Product overview**

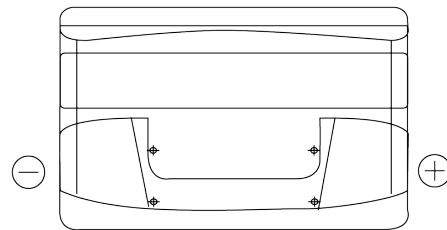
Batteries for Cars

**Excell EB950**

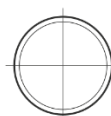


Part number	EB950
Technology	Flooded
EAN/GTIN	3661024034586
Voltage	12 V
Capacity	95 Ah
CCA	800 A
Length	353 mm
Width	175 mm
Height	190 mm
Box size	L05
Polarity	ETN 0
Terminal Type	EN taper post
Hold Down	B13
Weights (subject of variation)	21.60 kg

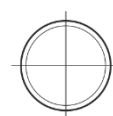
**Polarity**



**Terminal Type**



Positive Terminal



Negative Terminal

**Hold Down**



Design, features and specifications are subject to change without notice. We disclaim any representation or warranty, express or implied, concerning the data or recommendations, and in no event shall be liable for any loss or damage claimed to have arisen as a result. Some products may not be available in your local market.