

**Product overview**

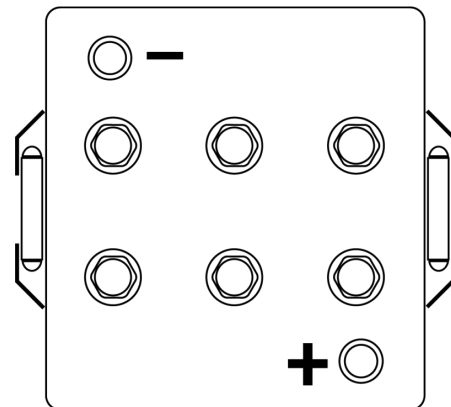
Batteries for Marine and Leisure

**Equipment AGM EQ1000**

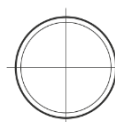
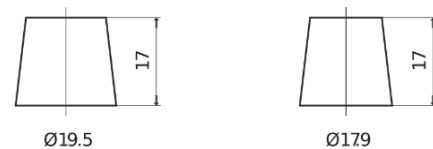


Part number	EQ1000
Technology	AGM
EAN/GTIN	3661024037471
Voltage	12 V
Capacity	120.0 Ah
Watt hour	1000 Wh
Length	286 mm
Width	269 mm
Height	230 mm
Box size	D07
Polarity	ETN 2
Terminal Type	EN taper post
Hold Down	B0
Weights (subject of variation)	40.00 kg

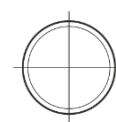
**Polarity**



**Terminal Type**



Positive Terminal



Negative Terminal

**Hold Down**



Design, features and specifications are subject to change without notice. We disclaim any representation or warranty, express or implied, concerning the data or recommendations, and in no event shall be liable for any loss or damage claimed to have arisen as a result. Some products may not be available in your local market.