

Product overview

Batteries for Marine and Leisure

Equipment AGM EQ800

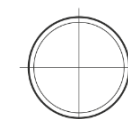


Part number	EQ800
Technology	AGM
EAN/GTIN	3661024037464
Voltage	12 V
Capacity	95.0 Ah
Watt hour	800 Wh
Length	353 mm
Width	175 mm
Height	190 mm
Box size	L05
Polarity	ETN 0
Terminal Type	EN taper post
Hold Down	B13
Weights (subject of variation)	26.10 kg

Polarity



Terminal Type



PositiveTerminal



NegativeTerminal

Hold Down



Design, features and specifications are subject to change without notice. We disclaim any representation or warranty, express or implied, concerning the data or recommendations, and in no event shall be liable for any loss or damage claimed to have arisen as a result. Some products may not be available in your local market.