

Product overview

Batteries for Trucks, Buses, Construction, Agriculture

PowerPRO Agri&Construction CJ1652

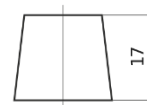


Part number	CJ1652
Technology	Flooded
EAN/GTIN	3661024016858
Voltage	6 V
Capacity	165.0 Ah
CCA	900 A
Length	335 mm
Width	175 mm
Height	239 mm
Box size	MT5
Polarity	ETN 0
Terminal Type	EN taper post
Hold Down	B1
Weights (subject of variation)	21.80 kg

Polarity



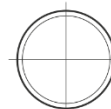
Terminal Type



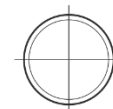
Ø19.5



Ø179



Positive Terminal



Negative Terminal

Hold Down

3 notches



Design, features and specifications are subject to change without notice. We disclaim any representation or warranty, express or implied, concerning the data or recommendations, and in no event shall be liable for any loss or damage claimed to have arisen as a result. Some products may not be available in your local market.