

**Product overview**

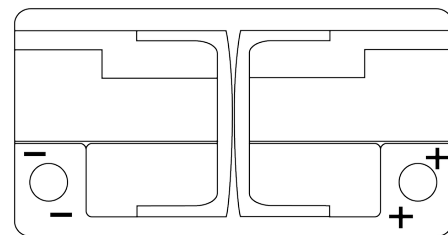
Batteries for Cars

**EFB EL752**

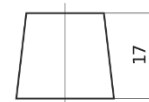


Part number	EL752
Technology	EFB
EAN/GTIN	3661024036559
Voltage	12 V
Capacity	75 Ah
CCA	730 A
Length	315 mm
Width	175 mm
Height	175 mm
Box size	LB4
Polarity	ETN 0
Terminal Type	EN taper post
Hold Down	B13
Weights (subject of variation)	18.60 kg

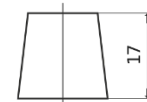
**Polarity**



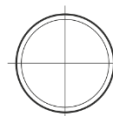
**Terminal Type**



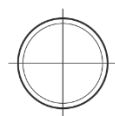
Ø19.5



Ø17.9



Positive Terminal



Negative Terminal

**Hold Down**

5 notches



Design, features and specifications are subject to change without notice. We disclaim any representation or warranty, express or implied, concerning the data or recommendations, and in no event shall be liable for any loss or damage claimed to have arisen as a result. Some products may not be available in your local market.