

**Product overview**

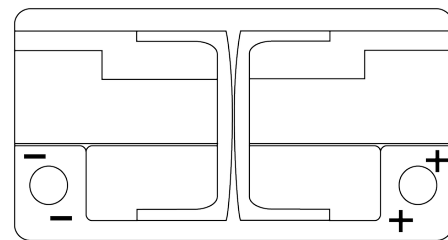
Batteries for Cars

**AGM EK820**

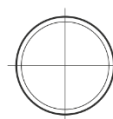
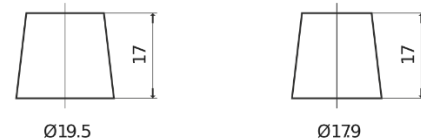


Part number	EK820
Technology	AGM
EAN/GTIN	3661024037914
Voltage	12 V
Capacity	82.0 Ah
CCA	800 A
Length	315 mm
Width	175 mm
Height	190 mm
Box size	L04
Polarity	ETN 0
Terminal Type	EN taper post
Hold Down	B13
Weights (subject of variation)	23.30 kg

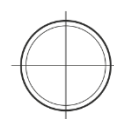
**Polarity**



**Terminal Type**



Positive Terminal



Negative Terminal

**Hold Down**



Design, features and specifications are subject to change without notice. We disclaim any representation or warranty, express or implied, concerning the data or recommendations, and in no event shall be liable for any loss or damage claimed to have arisen as a result. Some products may not be available in your local market.