

Product overview



Batteries for Trucks, Buses, Construction, Agriculture

PowerPRO Agri&Construction CJ1652

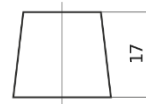


| | |
|--------------------------------|---------------|
| Part number | CJ1652 |
| Technology | Flooded |
| EAN/GTIN | 3661024016858 |
| Voltage | 6 V |
| Capacity | 165 Ah |
| CCA | 900 A |
| Length | 335 mm |
| Width | 175 mm |
| Height | 239 mm |
| Box size | MT5 |
| Polarity | ETN 0 |
| Terminal Type | EN taper post |
| Hold Down | B1 |
| Weights (subject of variation) | 22.90 kg |

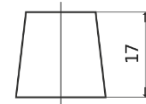
Polarity



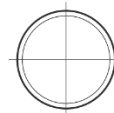
Terminal Type



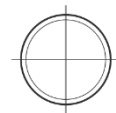
Ø19.5



Ø17.9

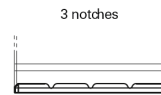


Positive Terminal



Negative Terminal

Hold Down



3 notches



10.5

Design, features and specifications are subject to change without notice. We disclaim any representation or warranty, express or implied, concerning the data or recommendations, and in no event shall be liable for any loss or damage claimed to have arisen as a result. Some products may not be available in your local market.