

Product overview

Batteries for Marine and Leisure

Equipment Li-Ion EV1250S

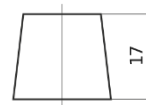


Part number	EV1250S
Technology	Li-Ion
EAN/GTIN	3661024038027
Voltage	12 V
Capacity	96 Ah
Watt hour	1250 Wh
Length	355 mm
Width	176 mm
Height	190 mm
Box size	L05
Polarity	ETN 0
Terminal Type	EN taper post
Hold Down	B13
Weights (subject of variation)	12.60 kg

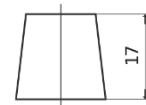
Polarity



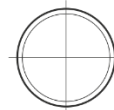
Terminal Type



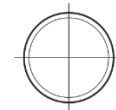
Ø19.5



Ø179



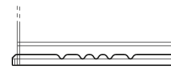
Positive Terminal



Negative Terminal

Hold Down

5 notches



Design, features and specifications are subject to change without notice. We disclaim any representation or warranty, express or implied, concerning the data or recommendations, and in no event shall be liable for any loss or damage claimed to have arisen as a result. Some products may not be available in your local market.