

Product overview

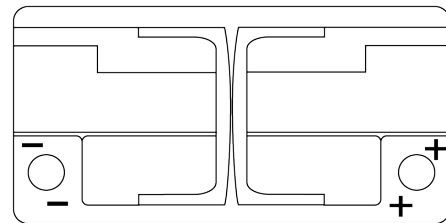
Batteries for Cars

EFB EL1000



Part number	EL1000
Technology	EFB
EAN/GTIN	3661024037389
Voltage	12 V
Capacity	100 Ah
CCA	900 A
Length	353 mm
Width	175 mm
Height	190 mm
Box size	L05
Polarity	ETN 0
Terminal Type	EN taper post
Hold Down	B13
Weights (subject of variation)	25.50 kg

Polarity

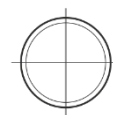
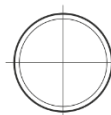


Terminal Type



Ø19.5

Ø17.9



Positive Terminal

Negative Terminal

Hold Down



5 notches

10.5

Design, features and specifications are subject to change without notice. We disclaim any representation or warranty, express or implied, concerning the data or recommendations, and in no event shall be liable for any loss or damage claimed to have arisen as a result. Some products may not be available in your local market.