

## Product overview

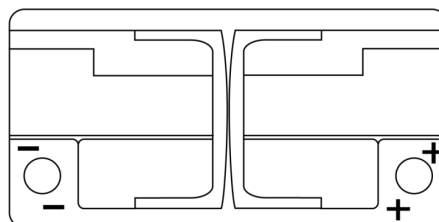
Batteries for Cars

### EFB SL1000

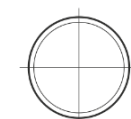
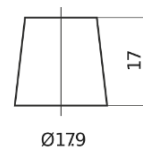
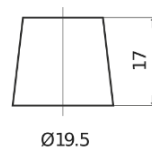


Part number	SL1000
Technology	EFB
EAN/GTIN	3661024066532
Voltage	12 V
Capacity	100.0 Ah
CCA	900 A
Length	353 mm
Width	175 mm
Height	190 mm
Box size	L05
Polarity	ETN 0
Terminal Type	EN taper post
Hold Down	B13
Weights (subject of variation)	25.50 kg

#### Polarity



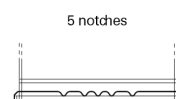
#### Terminal Type



PositiveTerminal

NegativeTerminal

#### Hold Down



Design, features and specifications are subject to change without notice. We disclaim any representation or warranty, express or implied, concerning the data or recommendations, and in no event shall be liable for any loss or damage claimed to have arisen as a result. Some products may not be available in your local market.