

Product overview

Batteries for Cars

Plus CB451

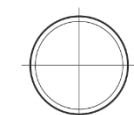


Part number	CB451
Technology	Flooded
EAN/GTIN	3661024014489
Voltage	12 V
Capacity	45.0 Ah
CCA	330 A
Length	220 mm
Width	135 mm
Height	225 mm
Box size	E02
Polarity	ETN 1
Terminal Type	EN taper post
Hold Down	B1
Weights (subject of variation)	12.50 kg

Polarity



Terminal Type



Positive Terminal



Negative Terminal

Hold Down



Design, features and specifications are subject to change without notice. We disclaim any representation or warranty, express or implied, concerning the data or recommendations, and in no event shall be liable for any loss or damage claimed to have arisen as a result. Some products may not be available in your local market.