

**Product overview**

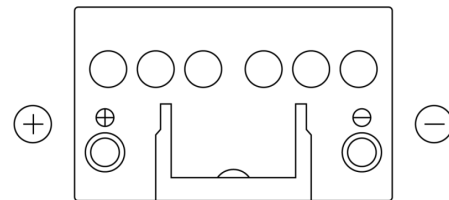
Batteries for Cars

**Excell EB451**

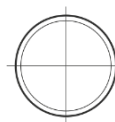


Part number	EB451
Technology	Flooded
EAN/GTIN	3661024034487
Voltage	12 V
Capacity	45.0 Ah
CCA	330 A
Length	220 mm
Width	135 mm
Height	225 mm
Box size	E02
Polarity	ETN 1
Terminal Type	EN taper post
Hold Down	B1
Weights (subject of variation)	12.50 kg

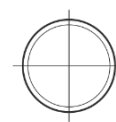
**Polarity**



**Terminal Type**



Positive Terminal



Negative Terminal

**Hold Down**



Design, features and specifications are subject to change without notice. We disclaim any representation or warranty, express or implied, concerning the data or recommendations, and in no event shall be liable for any loss or damage claimed to have arisen as a result. Some products may not be available in your local market.