

## Product overview

Batteries for Marine and Leisure

### Equipment Li-Ion EV1250S



Part number	EV1250S
Technology	Li-Ion
EAN/GTIN	3661024038027
Voltage	12 V
Capacity	96.0 Ah
Watt hour	1250 Wh
Length	355 mm
Width	176 mm
Height	190 mm
Box size	L05
Polarity	ETN 0
Terminal Type	EN taper post
Hold Down	B13
Weights (subject of variation)	12.60 kg

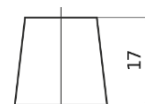
#### Polarity



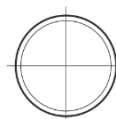
#### Terminal Type



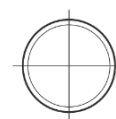
Ø19.5



Ø17.9

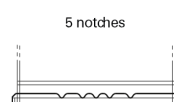


Positive Terminal



Negative Terminal

#### Hold Down



5 notches



10.5

Design, features and specifications are subject to change without notice. We disclaim any representation or warranty, express or implied, concerning the data or recommendations, and in no event shall be liable for any loss or damage claimed to have arisen as a result. Some products may not be available in your local market.