

Product overview



Batteries for Marine and Leisure

Dual AGM EP2100



Product registered and

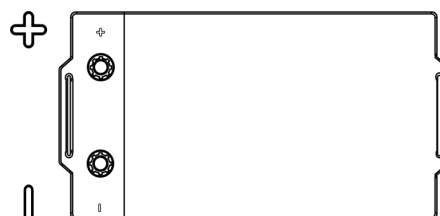
ncc verified

www.thencc.org.uk

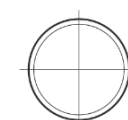
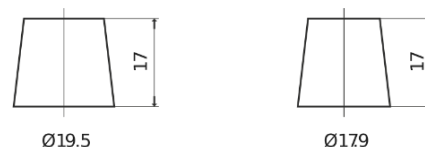


Part number	EP2100
Technology	AGM
EAN/GTIN	3661024035934
Voltage	12 V
Capacity	240.0 Ah
CCA	1200 A
Watt hour	2100 Wh
Length	518 mm
Width	274 mm
Height	240 mm
Box size	D06
Polarity	ETN 3
Terminal Type	EN taper post
Hold Down	B0
Weights (subject of variation)	70.00 kg

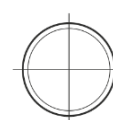
Polarity



Terminal Type



Positive Terminal



Negative Terminal

Hold Down



Design, features and specifications are subject to change without notice. We disclaim any representation or warranty, express or implied, concerning the data or recommendations, and in no event shall be liable for any loss or damage claimed to have arisen as a result. Some products may not be available in your local market.