

Be one step ahead.

Reduce costs and boost your business with Motion+ Fleet.



Creating the future – the Exide way:



Innovation



Reliability



Sustainability



High Performance



The world is becoming more digital every day. **Motion+ Fleet ensures that your business can keep up.**



Total cost of ownership (TCO) is one of the topics keeping our globalized world on its toes. We are pooling our expertise and placing a strong focus on intelligent software, tools, and accessories that meet the demands of Industry 4.0, save energy, and are compatible with the digital transformation currently underway.

Motion+ Fleet is just the beginning. Our tools help you with the challenge of constantly rethinking the efficiency of your business. Flexible solutions at the highest level support you in solving tomorrow's tasks today.

You can rely on us at all times: Our up-to-date products and solutions are built on smart technology and cloud-based software. Together we can also focus on topics such as sustainability and environmental protection, because we all want to leave a future worth living for the next generations.

The smart software for big benefits.



Even more business optimization – with our Motion+ Smart Tools

Exide has a lot more to offer aside from Motion+ Fleet. We can provide you with a comprehensive package of valuable tools to increase your business performance, workflow efficiency, and cost reduction potential. Ask us for more information about batteries and chargers and allow us to advise you on our Motion+ Smart Tools.

What is the secret behind an efficient fleet? **Making right decisions.**

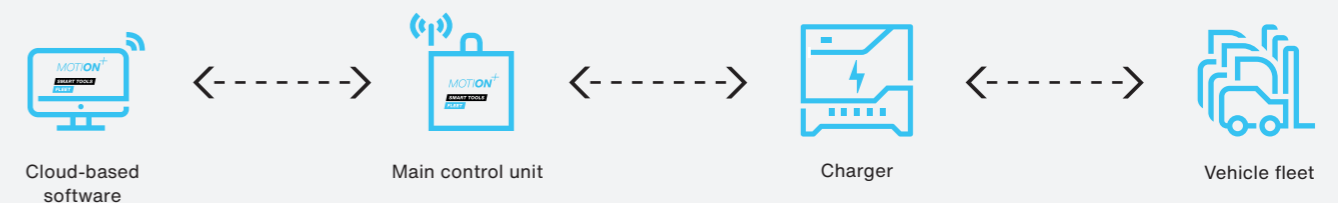
Downtimes not only cost money, but also increase the probability of falling behind. Improvement, increased effectiveness, and the smart, sustainable management of resources are the best ways to counteract this.

Our upgrade for your uptime.

Motion+ Fleet is the perfect optimization solution: Organize your battery and charger pool with our new tool, which gives you all the key features of a state-of-the-art energy solutions management system.

Let your equipment call you before it's too late.

Motion+ Fleet means maximum uptime for your fleet. Whether you have one location or many, our smart, networked chargers provide Motion+ Fleet software with critical battery and charging information. As a result, our next generation of fleet management detects battery or charger issues long before your business is impacted.



Act independently within the cloud.

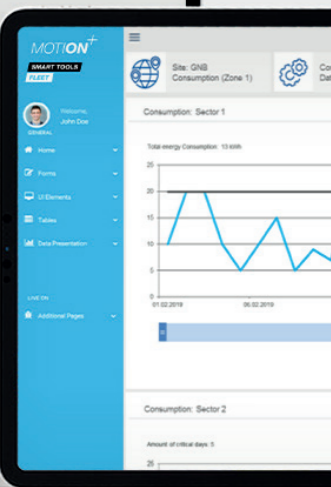
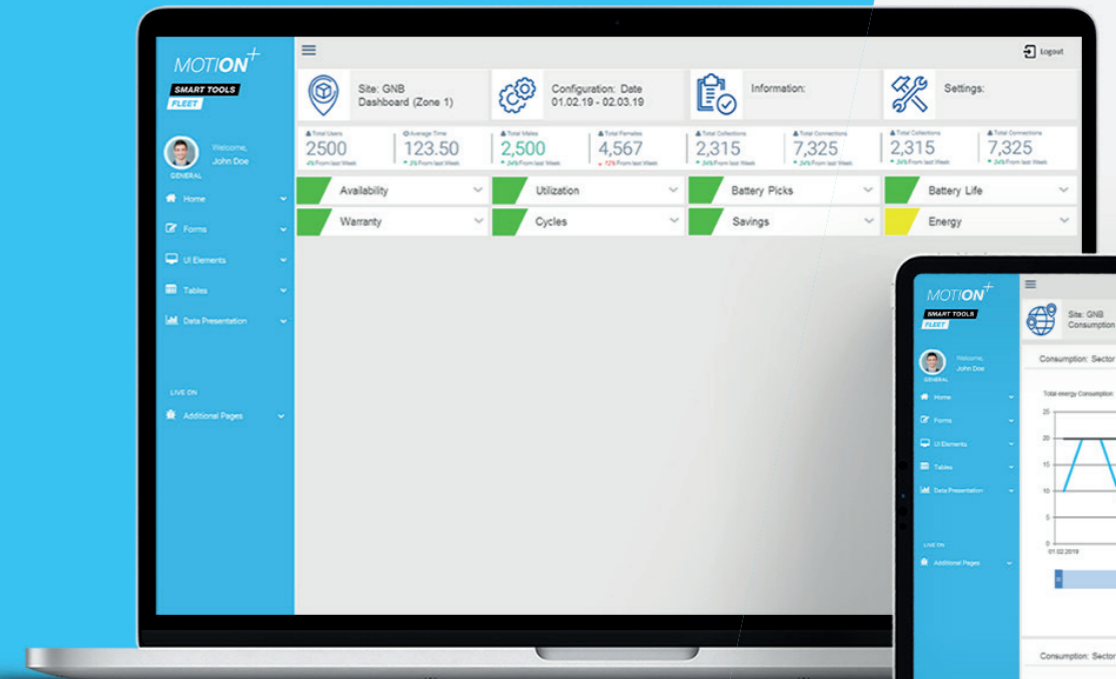
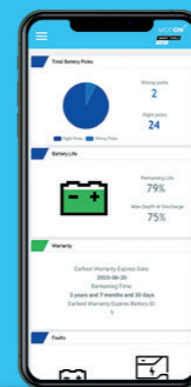
With Motion+ Fleet, you can turn your logistics operations into data, make them more transparent, and use them to your advantage. Of course, you can access the data from anywhere in the world, secured by the market-leading cloud architecture AWS. Whether from laptops, smartphones, or tablets, you can access all data and the performance indicators you have defined for each operating location at any time:

- Constant visibility of battery and charging history and vital parameters
- Monitoring, analysis, and control of energy consumption
- Battery warranty and lifetime management
- Automated alarm messages for logistics management



Fleet managers have very high demands.

This is our drive to develop the best cloud-based software solution.



Fleet managers don't want to rely on their gut feelings only. That's why they trust in verifiable data.

Motion+ Fleet improves the usage profile of your batteries and gets your assets operating at maximum efficiency. The software plans which battery is next for which vehicle type, eliminating undue stress on any one of them.

Minimize energy costs.

With Motion+ Fleet, Warehouse Managers can stay on top of their energy bill. Smart integrated features such as time shifting and peak shaving allow them to optimize energy consumption according to the best tariffs and

thus significantly reduce energy costs. Additionally, the overall process analysis and fleet optimization will reduce the environmental operating footprint further.

Let's boost your business.

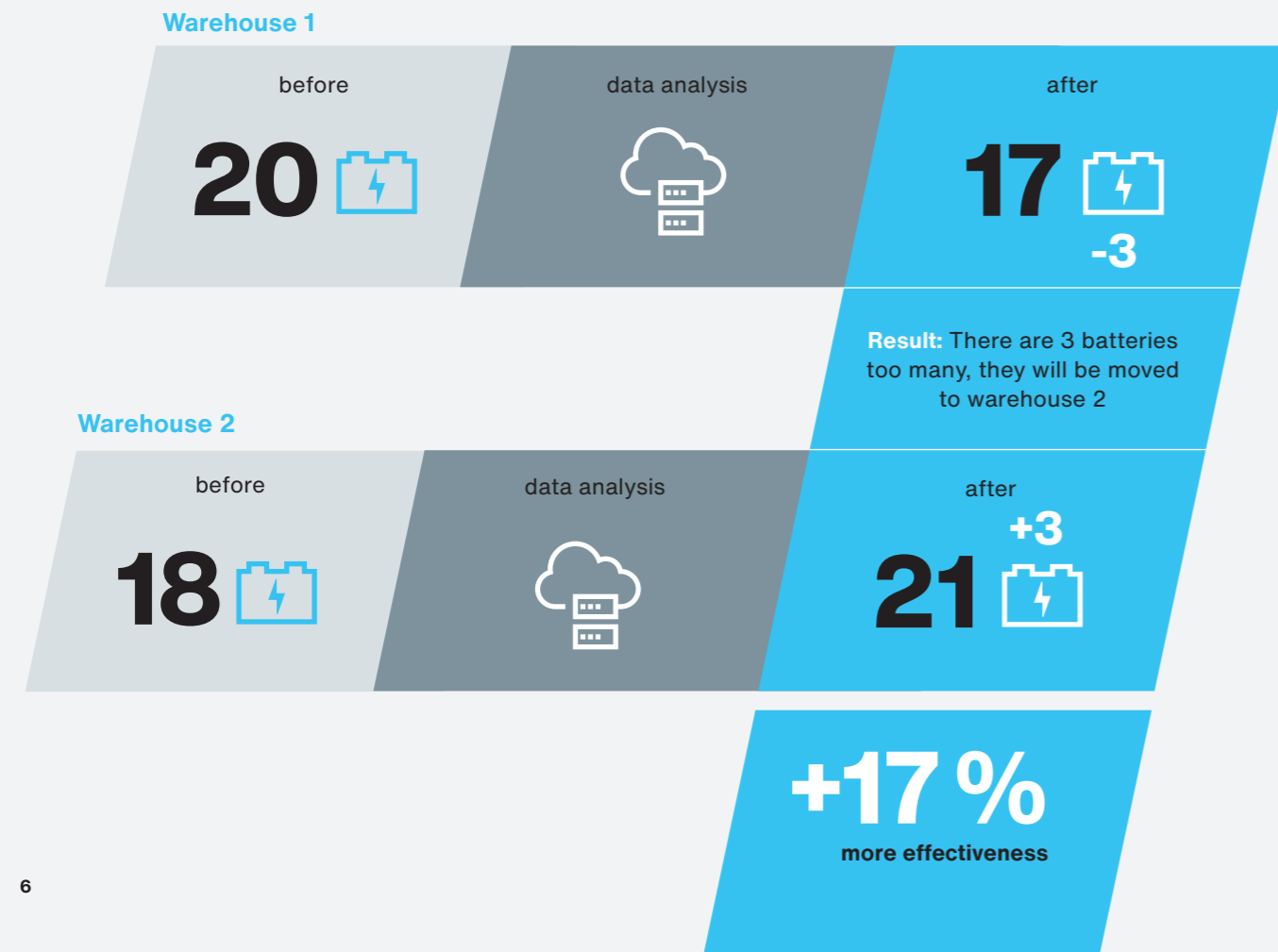
Our efficient battery fleet management system not only supports your gut feeling but also provides you with reliable real-time data and facts. With the help of smart analyses and reports, you can make transparent decisions that you can absolutely rely on.

to ensure efficiency without sacrificing financially. We want to help you maintain that balance.

Best of all, the system quickly shows you where there is potential for optimization. You can assess if there are always enough batteries available or even if there are too many, taking up valuable space and superfluous to needs.

Ensure maximum effectiveness with minimum use of resources. It's all about avoiding downtime and continuing

Example of improvement with Motion+ Fleet.



A good assistance system does not merely react, it anticipates. That's why Motion+ Fleet is your perfect sidekick.

Let the experts support you remotely in finding further optimization potential.

Motion+ Fleet helps you to:



Manage your chargers



Create data transparency



Monitor your batteries and chargers



Control your assets



Optimize processes



Manage and optimize energy costs

The right solution for every customer.

Motion+ Fleet is adaptable and expandable to offer you the flexibility to use it in every situation. From a single charger to multi-location charging station management, we have the solution for you.

Flexibility at its best.

	Motion+ Fleet Essential	Motion+ Fleet Premium	Motion+ Fleet Ultimate
Indication of battery priority, battery availability	✓	✓	✓
Battery lifetime and warranty management (with BattID)	✓	✓	✓
Cloud uplink and online access to live data anytime, anywhere, and from any Internet-enabled device like PC, smartphone, tablet	✗	✓	✓
Automatic e-mail alert system	✗	✓	✓
Updates and remote support	✗	✓	✓
Fleet lifetime management and optimization	✗	✓	✓
Multi-site capability and management	✗	✗	✓
Multiple administrator roles	✗	✗	✓ 5 admins
Users	1	3	5 per unit
Managed chargers	500	500	Unlimited

Energy that goes beyond.



- Transportation plant
- Industrial plant
- R&D facility
- Recycling
- Global HQ
- Principle sales offices
+ Sales offices and distribution centers across the world



<p>All manufacturing plants ISO 9001 certified</p>	<p>All manufacturing plants ISO 14001 certified</p>	<p>All automotive plants ISO TS 16949 approved</p>	<p>All manufacturing plants ISO 50001 registered</p>
---	--	---	---

exidegroup.com



Subject to alteration
MXGMFTTEPDF00122