

Product overview

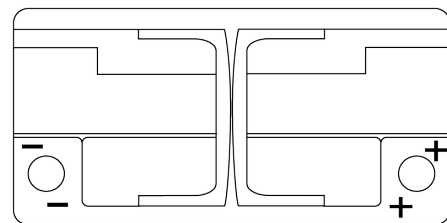
Batteries for Marine and Leisure

Dual EFB TZ850

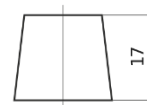


Part number	TZ850
Technology	EFB
EAN/GTIN	3661024057608
Voltage	12 V
Capacity	100.0 Ah
CCA	900 A
Watt hour	850 Wh
Length	353 mm
Width	175 mm
Height	190 mm
Box size	L05
Polarity	ETN 0
Terminal Type	EN taper post
Hold Down	B13
Weights (subject of variation)	25.50 kg

Polarity



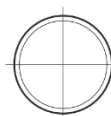
Terminal Type



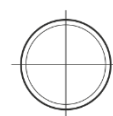
Ø19.5



Ø17.9

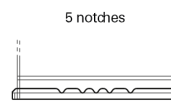


Positive Terminal



Negative Terminal

Hold Down



5 notches



10.5

Design, features and specifications are subject to change without notice. We disclaim any representation or warranty, express or implied, concerning the data or recommendations, and in no event shall be liable for any loss or damage claimed to have arisen as a result. Some products may not be available in your local market.