

Product overview

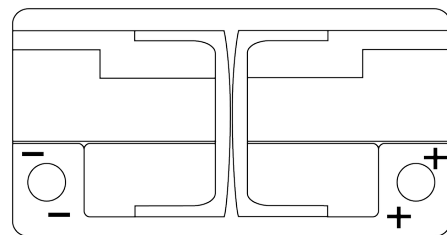
Batteries for Cars

EFB TL752

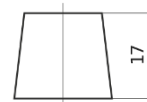


Part number	TL752
Technology	EFB
EAN/GTIN	3661024056540
Voltage	12 V
Capacity	75.0 Ah
CCA	730 A
Length	315 mm
Width	175 mm
Height	175 mm
Box size	LB4
Polarity	ETN 0
Terminal Type	EN taper post
Hold Down	B13
Weights (subject of variation)	18.60 kg

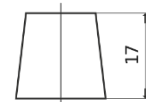
Polarity



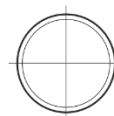
Terminal Type



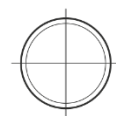
Ø19.5



Ø17.9



Positive Terminal



Negative Terminal

Hold Down

5 notches



Design, features and specifications are subject to change without notice. We disclaim any representation or warranty, express or implied, concerning the data or recommendations, and in no event shall be liable for any loss or damage claimed to have arisen as a result. Some products may not be available in your local market.