

# The power of smartness.

Solution Mega – Containerized energy storage systems based on Li-Ion battery technology. Combining sustainable energy storage, independence from conventional energy sources, and continuity of high-power supply with significant monetary benefits.



**Plug-and-play system**  
with factory pre-set  
parameters.



Creating the future – the Exide Technologies way:



Innovation



Reliability



Sustainability



High Performance

GNB Industrial Power becomes  
**E** / a division of Exide Technologies  
[www.exidegroup.com](http://www.exidegroup.com)

**SOLITION**  
**MEGA**

**E** / **CUSTOMIZED ENERGY SYSTEMS™**



# It's not only charged with energy. But also full of knowledge.

All our experience, knowledge and expertise is packed into this answer to the challenges of the today's energy market. We're taking on the big picture. Energy storage systems are the key factor for energy transition.

Solition Mega based on lithium-ion technology can be used for various applications in front-of-the-meter (FTM) and behind-the-meter (BTM), providing several benefits to energy consumers and the energy market as a whole. Consumers can store surplus energy from renewable energies for later use or use the storage as a stand-alone system for energy trading and frequency stabilization to balance supply and demand and improve grid stability.

## Tailormade for these applications:



**Commercial and industrial applications**



**Agriculture**



**E-Mobility**



**Renewable energy and biogas plants**



**Utilities**

## Benefit from our expertise:



Worldwide data access



Plug-and-Play with pre-set parameters



Over-the-Air update of system software



Flexible to be placed at various locations; moveable system



Flexible modular configurations



Open infrastructure towards third party aggregators



Design and assembly based in Europe

## A perfect match.

In 2021, global player Exide Technologies acquired Ateps Nederland BV, an innovative and dynamic provider of lithium-ion based energy storage systems. Combining innovation and global energy storage expertise, they created **Customized Energy Systems**, thereby offering sustainable energy solutions for future key applications such as time shift, frequency control, peak shaving, energy trading and more.

# Flexibility in new dimensions.

## And in various sizes.

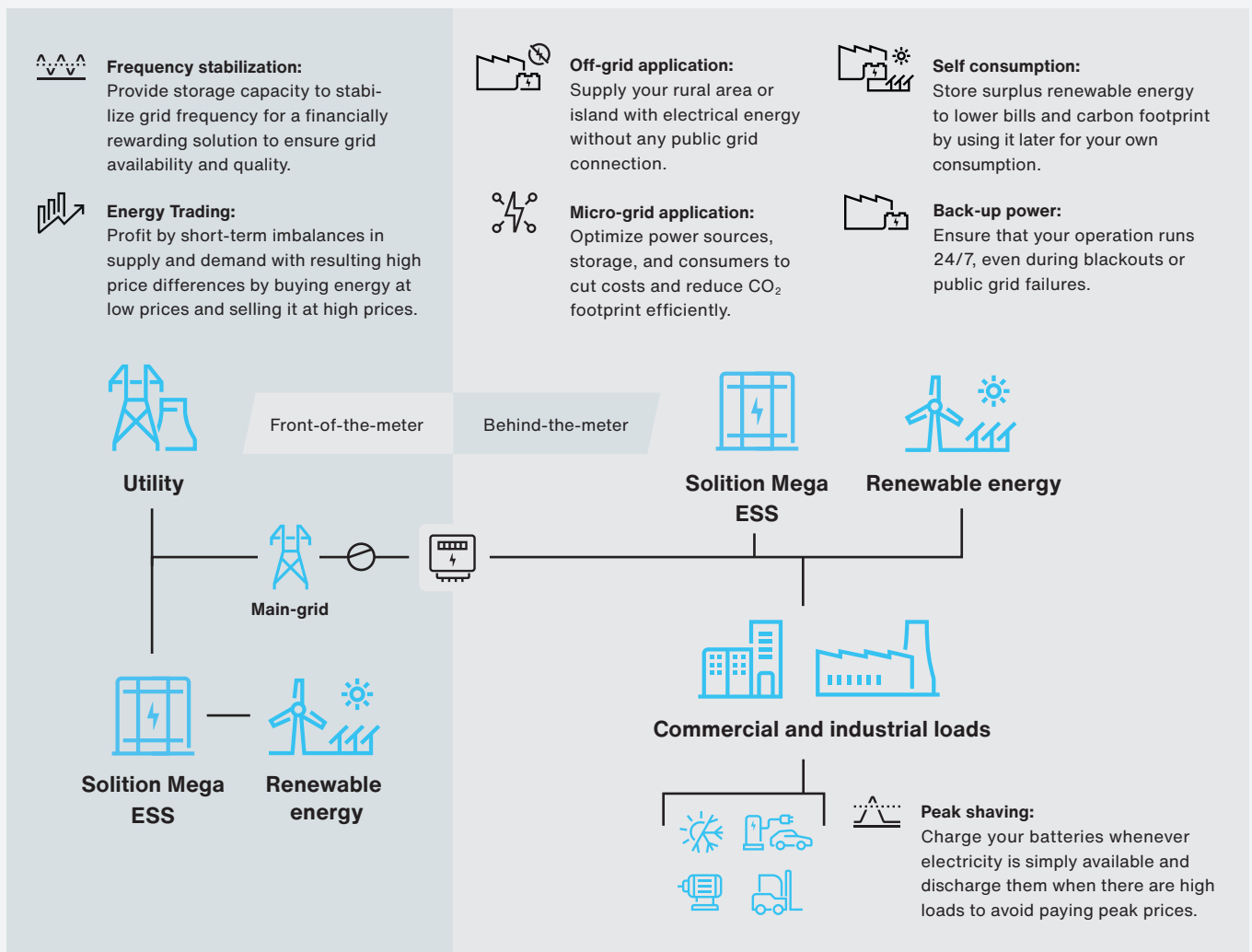
No matter if in a 10 feet, 20 feet or 40 feet container: Solition Mega energy storage systems provide a reliable and efficient solution for a wide range of energy storage needs including micro-grid application, frequency regulation, peak shaving, back-up power, energy trading and self-consumption. The system's compact and flexible design allows it to be placed at various locations, should

local conditions change. Explore our cost-effective, environmentally friendly and high power solution and profit from cost savings and optimized energy use. All of these systems are also available as indoor solutions. Custom system sizes can also be made at the customer's request for an additional charge.



Scan for reference.

### Solition Mega energy storage systems help to:



### Smarter software.

We designed a software that adheres to the highest reliability standards. The control system harmonizes lithium batteries, converters, accessories, and other equipment to perform optimally over a vast temperature range and an extended duration. The application software prioritizes processing speed and security, while preserving adaptability. Our autonomous software supports peak shaving applications and solar optimization, while also allowing third-party control without endangering safety features. Moreover, it communicates with the cloud for logging and reporting, which enables remote servicing and over-the-air updates, if required.

# Energy that goes beyond.

- Automotive plant
- Industrial plant
- R&D facility
- Recycling
- Global HQ
- Principle sales offices  
+ sales offices and distribution centers across the world



<p>All manufacturing plants <b>ISO 9001</b> certified</p>	<p>All automotive plants <b>IATF 16949</b> certified</p>	<p>All manufacturing plants <b>ISO 14001</b> certified</p>	<p>All manufacturing plants <b>ISO 50001</b> certified</p>	<p>Most manufacturing plants <b>ISO 45001</b> certified</p>
---	--	--	--	---

**ENERGIZING  
A NEW  
WORLD**

**EXIDE<sup>®</sup>**  
TECHNOLOGIES