

**Product overview**

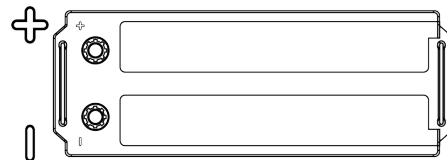
Batteries for Trucks, Buses, Construction, Agriculture

**StrongPRO EFB+ EE1403**

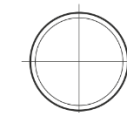
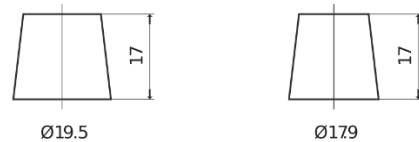


Part number	EE1403
Technology	EFB
EAN/GTIN	3661024035248
Voltage	12 V
Capacity	140 Ah
CCA	800 A
Length	513 mm
Width	189 mm
Height	223 mm
Box size	D04
Polarity	ETN 3
Terminal Type	EN taper post
Hold Down	B0
Weights (subject of variation)	38.20 kg

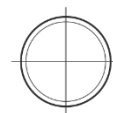
**Polarity**



**Terminal Type**



Positive Terminal



Negative Terminal

**Hold Down**



Design, features and specifications are subject to change without notice. We disclaim any representation or warranty, express or implied, concerning the data or recommendations, and in no event shall be liable for any loss or damage claimed to have arisen as a result. Some products may not be available in your local market.